



FINZZI
SURFACES

Chenille

LUXURY VINYL TILES

5 COLORS
1 SIZE

Chenille
Ivory
12'x24" /
30x61cm

Chenille

One of our textile inspo designs for soft and cosy areas.

Sizes



12" x 36" / 30 x 91cm

Thickness: 5mm

Pad: 1,5mm

Product Typology

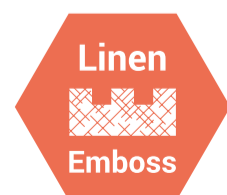


SPC Click



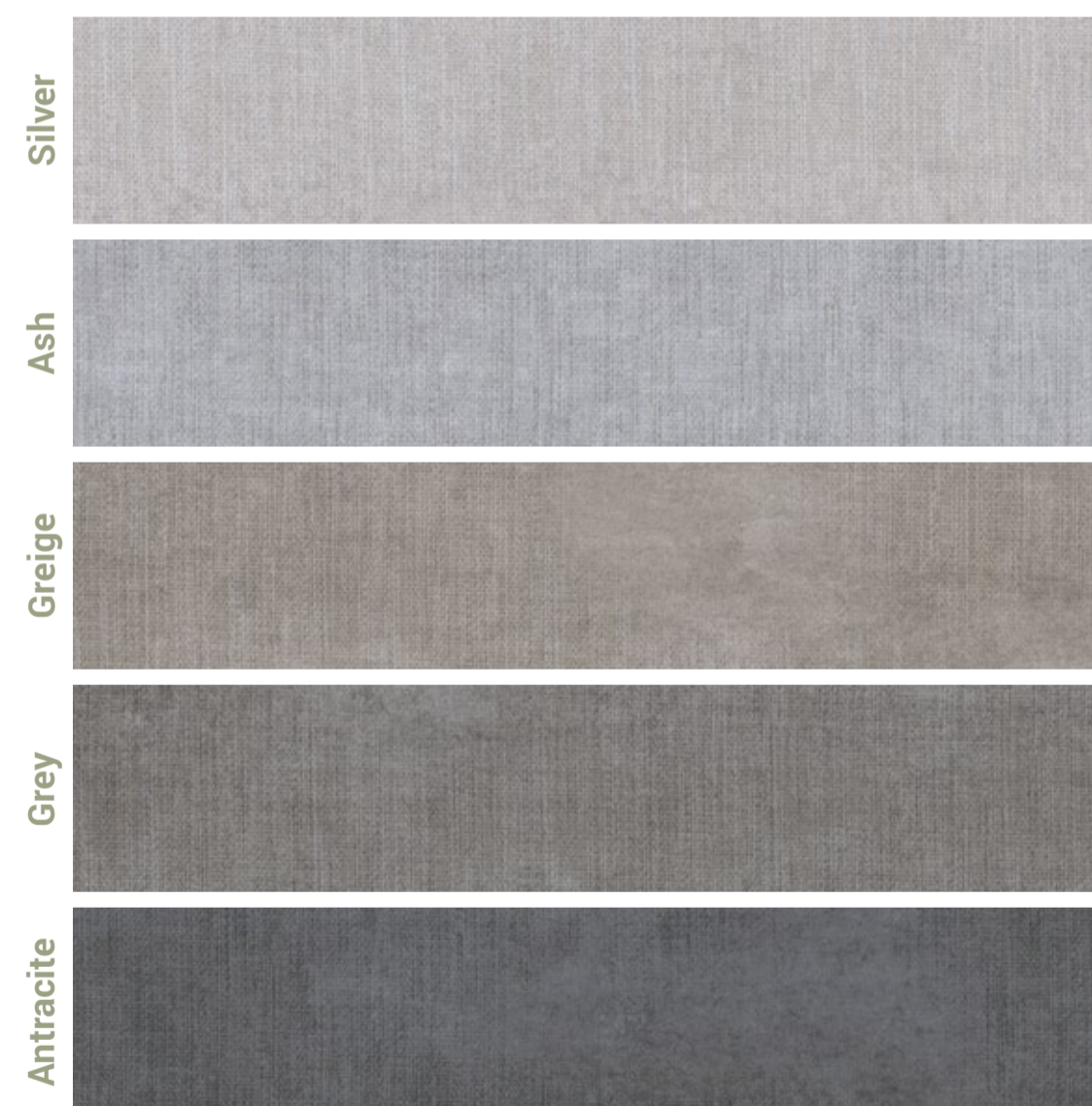
VSV Softouch

Finishes



Linen Emboss

Colors



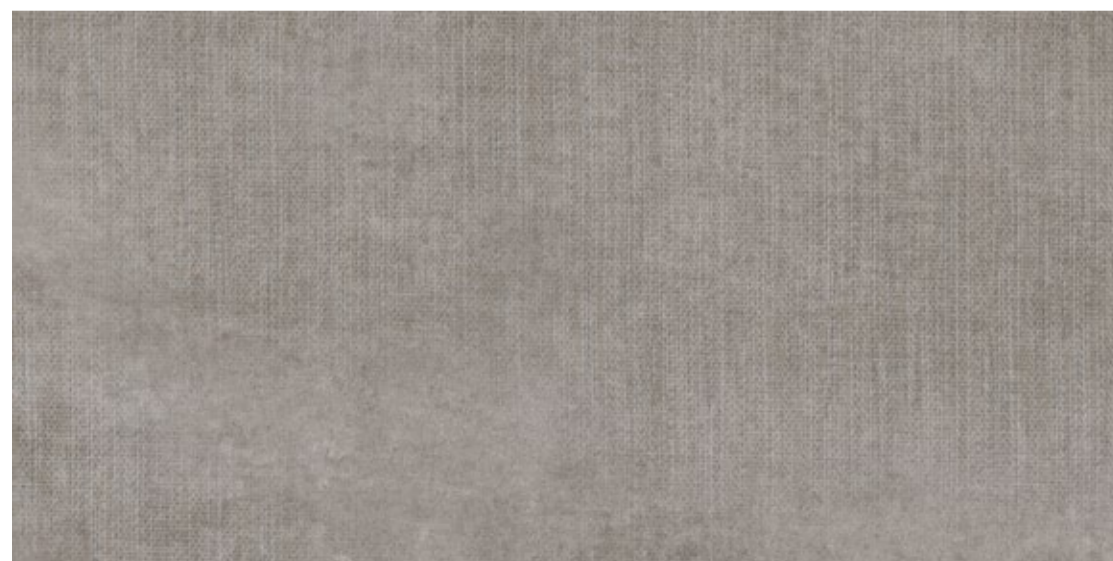
Chenille Silver



Chenille Ash



Chenille Greige



FINZZI
SURFACES

Chenille Grey



Chenille
Grey
12'x24" /
30x61cm

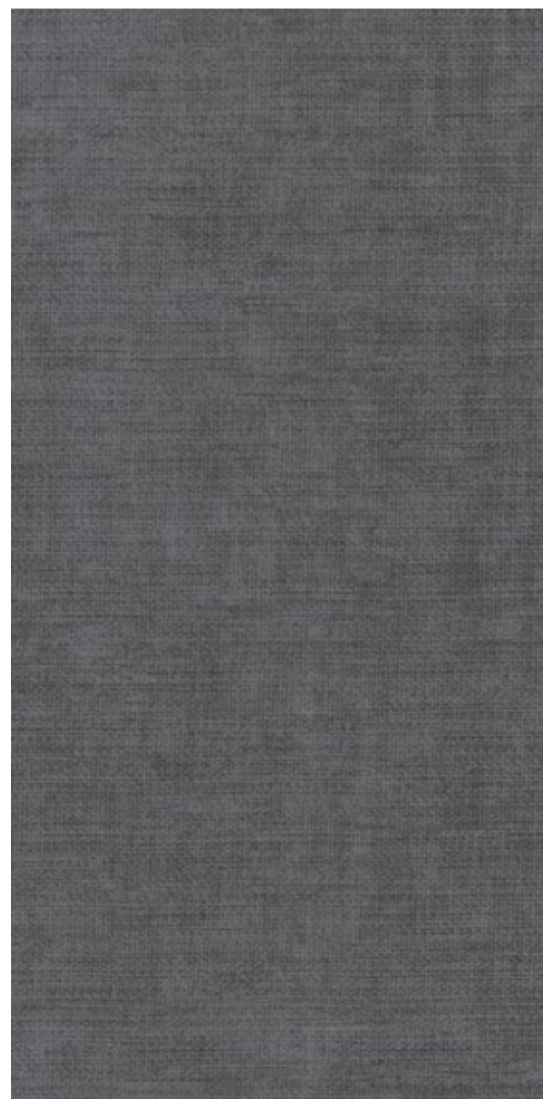


FINZZI
SURFACES

Chenille Antracite



Chenille
Antracite
12'x24" /
30x61cm



Product Advantages



Real Touch®
True to nature.
Real Touch®
Fiel a la naturaleza.



Cost effective
Overall cheaper to buy and install than conventional tile.
Económico
En general más barato de comprar e instalar que los azulejos convencionales.



Floor Score certified
All our products are Floor Score certified.
Certificado Floor Score
Todos nuestros productos tienen el certificado Floor Score.



Drop'n' Click®
The perfect union.
Drop'n' Click®
La unión perfecta.



Phthalate free technology
We use alternative plasticizers with substance-free technologies.
Tecnología libre de Ftalatos
Utilizamos plastificantes alternativos con tecnologías libres de sustancias nocivas.



Dust free build
No build debris.
Construcción libre de polvo
Sin restos de construcción.



Stain resistant & low maintenance
The top layer protects against knock and stains, they can be removed in seconds.
Resistente a las manchas y bajo mantenimiento
La capa superior protege contra golpes y manchas, pudiendo eliminarlos en segundos.



Waterproof
Moisture-resistance, ideal in kitchen or bathrooms.
Resistente al agua
Resistencia a la humedad, ideal en cocina o baños.



Floor & wall use
All our products can be applied to any surface, either floor or wall.
Uso para suelo y pared
Todos nuestros productos se pueden aplicar a cualquier superficie ya sea suelo o pared.



IXPE pad
Moisture barrier and sound proofing.
Pad IXPE
Barreda de humedad e insonorización.



Suitable for underfloor heating
Finzzi's floors are perfectly compatible with underfloor heating.
Preparado para suelo radiante
Los suelos de Finzzi son perfectamente compatibles con calefacción por suelo radiante.



Antislip
Firm under foot, with a slip resistance value of R10.
Antideslizante
Con un valor de resistencia al deslizamiento de R10.



High impact resistance
Does not leave traces or marks when supporting strong blows.
Alta resistencia al impacto
No deja huellas ni marcas al soportar golpes fuertes.



Wear Layer
Commercial grade wear layer protection.
Capa de protección
Capa de desgaste protectora para uso comercial.

PROFILING INFO



Flush stair nose A
2400x72x25mm
 Escalón empotrado A
 2400x72x25mm



Flush stair nose B
2400x115x25mm
 Escalón empotrado B
 2400x115x25mm



Skirting 90mm
2400x90x15mm
 Rodapié 90mm
 2400x90x15mm



Skirting 80mm
2400x80x15mm
 Rodapié 80mm
 2400x80x15mm



Stair nose
2400x58x18mm
 Peldaño
 2400x58x18mm



Reducer
2400x43x10mm
 Reductor
 2400x43x10mm



End-Cap
2400x35x7mm
 Tapa de acabado
 2400x35x7mm



T-molding
2400x46x7mm
 Moldura en forma de T
 2400x46x7mm



Quarter round
2400x28x16mm
 Cuarto de circunferencia
 2400x28x16mm

Profiling	Flooring Thickness	Pcs/box	Kg/box
T-moulding 2400x46x7mm	4~8mm	20	10
Reducer 2400x43x10mm	4~8mm	20	15
End-Cap 2400x35x7mm	4~8mm	20	14
Stair Nose 2400x54x18mm	4~8mm	10	11
Flush Stair Nose A 2400x72x25mm	4~8mm	10	15
Flush Stair Nose B 2400x115x25mm	4~8mm	10	18
Quarter Round 2400x28x16mm	4~8mm	25	17
Skirting 2400x90x15mm	4~8mm	10	20
Skirting 2400x80x15mm	4~8mm	10	11

NOTE: The thickness of the profiling might vary slightly according to the thickness of the flooring

NOTA: El espesor del perfil puede variar ligeramente de acuerdo con el espesor del suelo.

TECHNICAL INFORMATION

TECHNICAL PERFORMANCES	TEST STANDARDS	CHENILLE
Dimensional stability	ASTM F2199 - 09(2014)	MD MAX = -0.11mm / 185mm - PASS CMD MAX = -0.10mm / 164mm - PASS
Impact resistance	ASTM F1265 - 03a(2013)	No crack or breakage
Reaction to fire	EN 13501 - 1	Bfl s1 on concrete and Cfl s1 on wood substrate
Residual indentation	ASTM F1914 - 07 (2011)	1.3% max
Castor chair	NALFA LF 01-2011 Section 3.9	No damage visible after 25000 revolutions
Underfloor heating	EN ISO 10456	Suitable - max. 27°C / 81°F
Thermal resistance	ISO 10456	0.04 m ² K/W
Impact sound insulation	ASTM E492-09	IIC = 64
Resistance to light	ASTM F1515-15	≥8 (2.14) PASS
Resistance to chemicals	ASTM F925-13	High resistance
Slip resistance	DIN 51130-2014	Angle 23.5° - R10
Swelling in thickness	ASTM D7519-11	AVE: -0.30%
Fungi resistance	ASTM G21-15	No traces
Formaldehyde content	ASTM D6007-14	Not detected
Resistance to heat	ASTM F1514-03(2013)	After 7 days exposure: ΔE* = 0.30
Smoke density	ASTM E662	Less than 450
Indoor air quality	Floor Score Certified	
Heavy metal detection	ASTM F963-16	Not detected
Phthalate content	CPSC - CH - C1001 - 09.3	Not detected
Coefficient of friction	ASTM C1028-07	Dry condition average: 0.87 Wet condition average: 0.70



FINZZI
SURFACES

Finzzi Corporate Offices

Calle La Cosa 57, 12200 Onda (Castellón), Spain

Finzzi Sales USA

225 Executive Drive, Suite 8, Moorestown, New Jersey 08057

Email address

info@finzzi.com

Website

www.finzzi.com

Email address

finzzi@finzziusa.com

Website

www.finzziusa.com

Follow us

 [#finzzisurfaces](#)

 [#finzzisurfaces/](#)

 [#finzzi-surfaces/](#)