



FINZZI
SURFACES

Stage

LUXURY VINYL TILES

3 COLOURS
6 SIZES

Stage
Beige
18"x36" /
46x91cm

Stage

Inspired by marble, it provides solidity and freshness.

Sizes



12" x 48" / 30 x 123cm



18" x 36" / 46 x 91cm



18" x 18" /
46 x 46cm



36" x 36" / 91 x 91cm

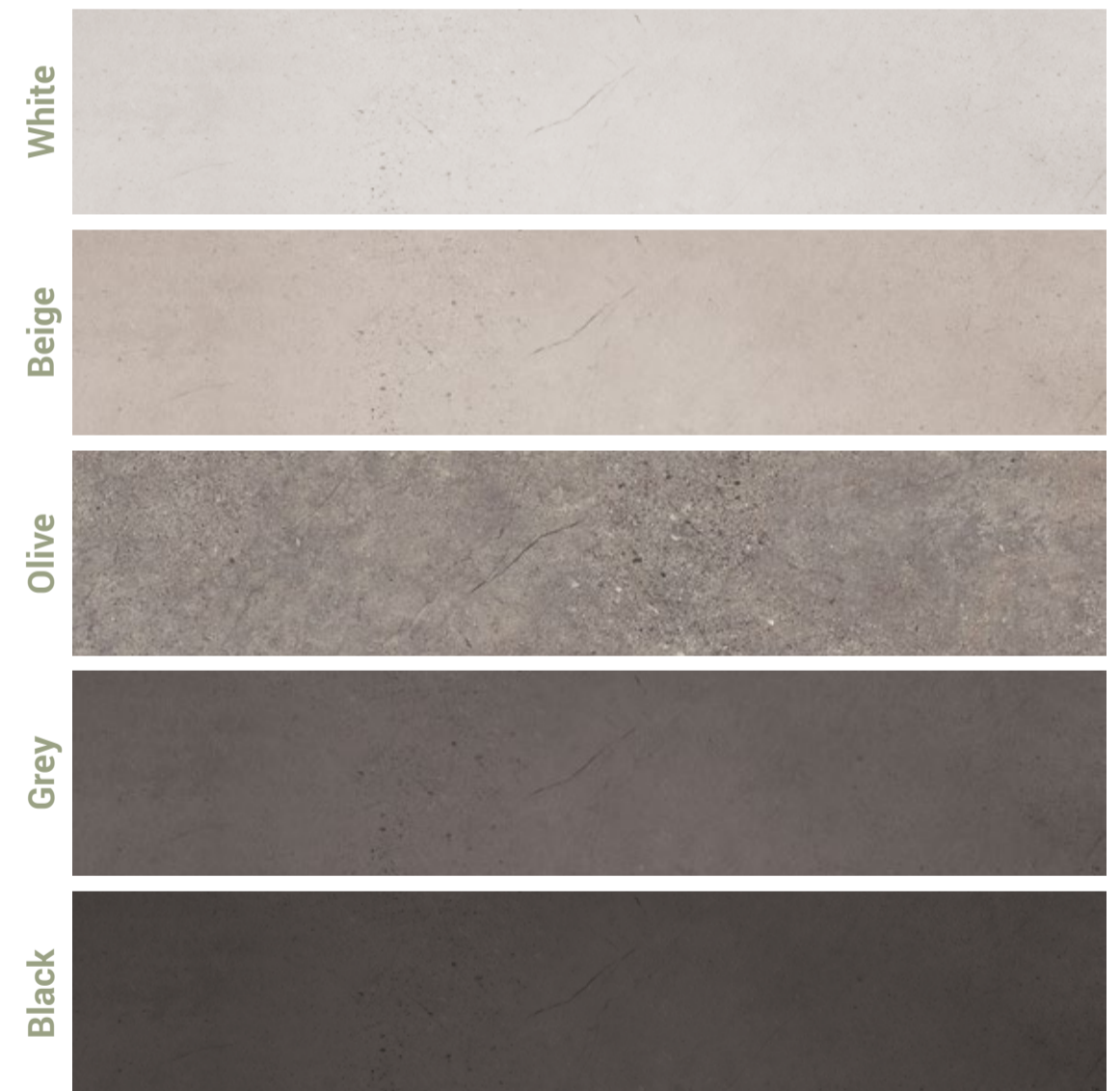


12" x 36" / 30 x 91cm



12" x 24" / 30 x 61cm

Colours



Product Typology



LVT Click



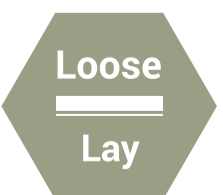
LVT Glue
Down



Sintered
Stone®



WPC Click



Loose lay



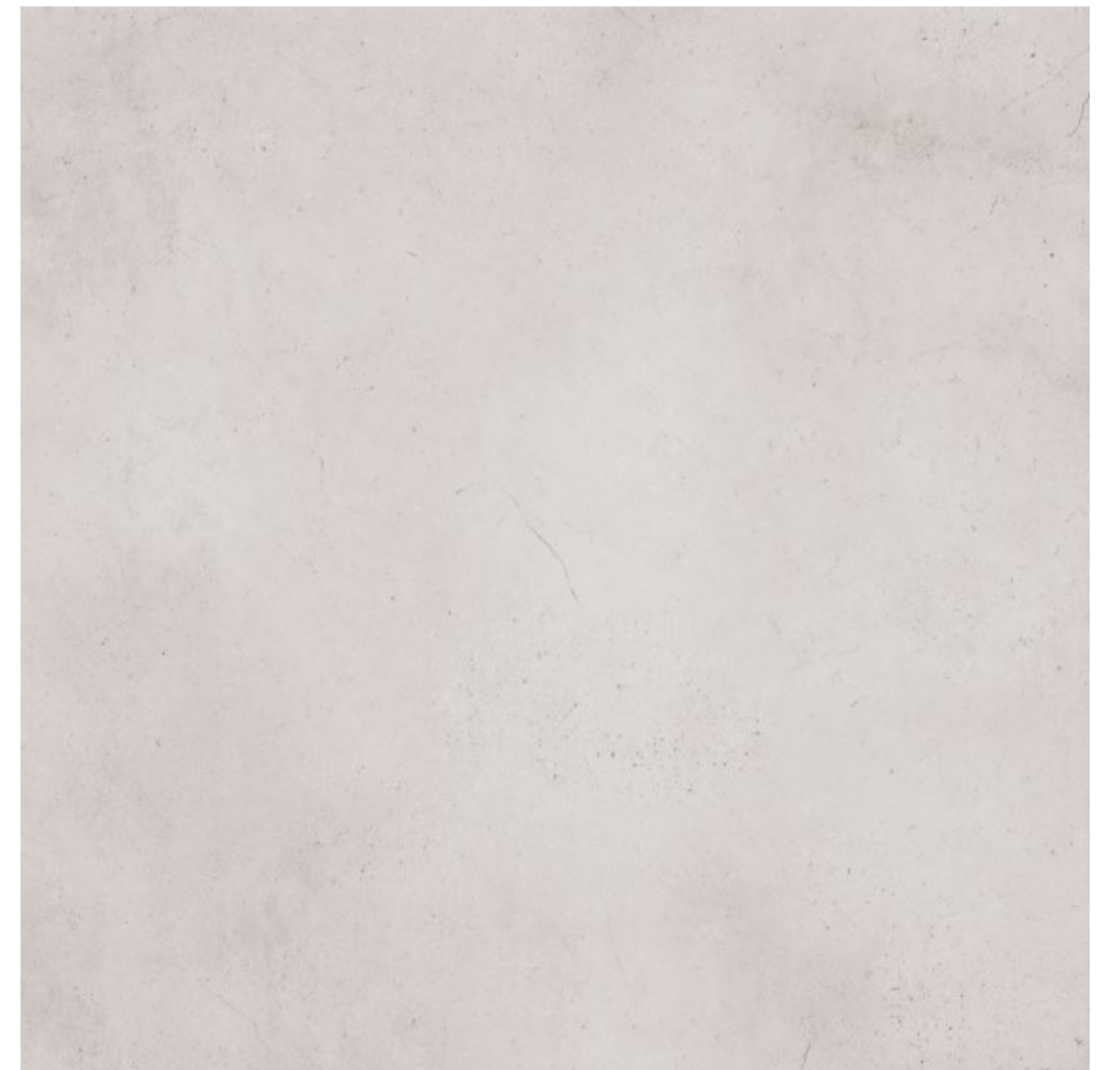
Stone Emboss

Finishes

FINZZI
SURFACES

Stage White

Stage
White
18"x36" /
46x91cm



FINZZI

Stage White



Stage
White
18"x36" /
46x91 cm

FINZZI
SURFACES

Stage Beige

Stage
Beige
18"x36" /
46x91cm



FINZZI



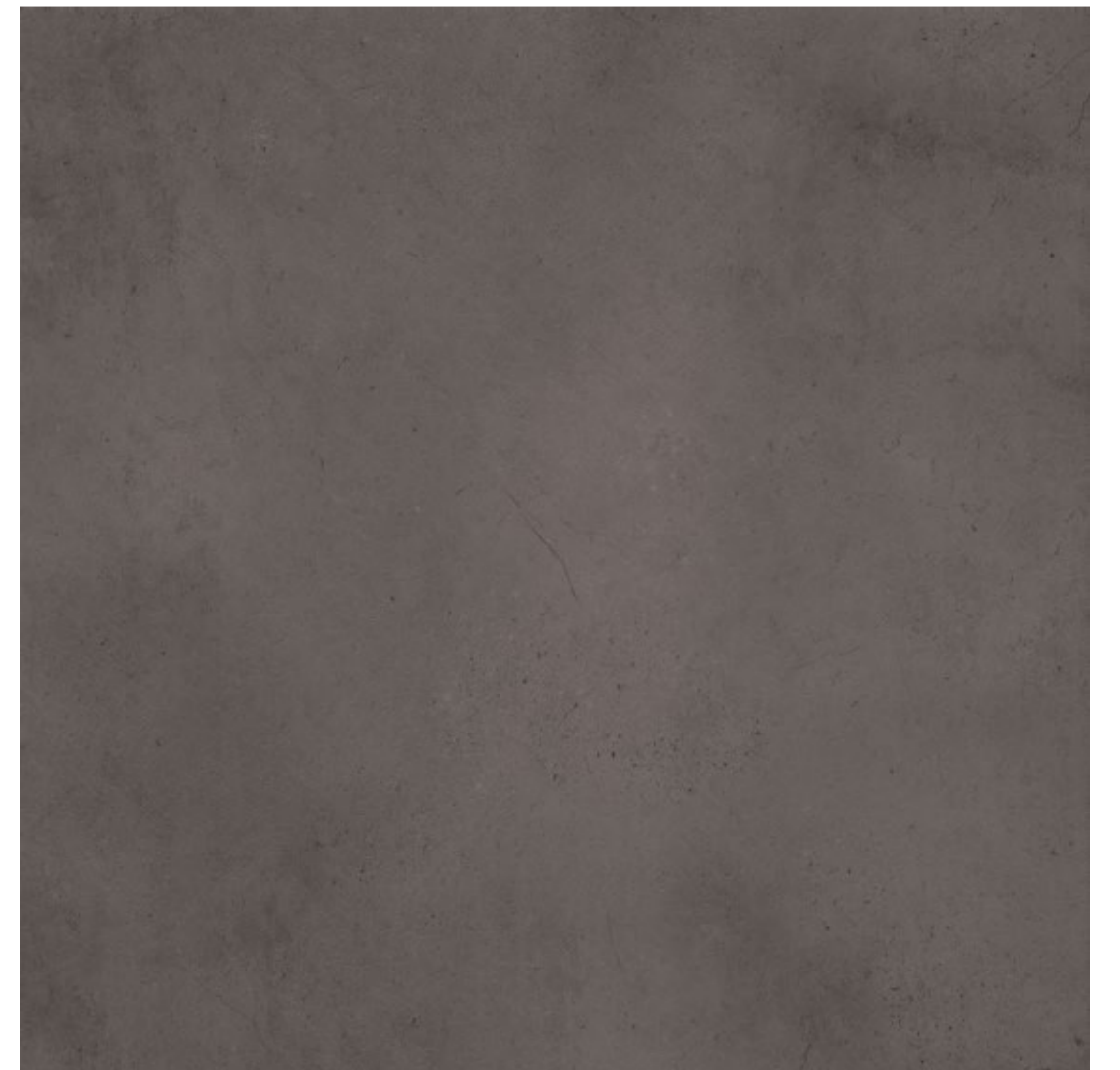
Stage Beige

Stage
Beige
18"x36" /
46x91cm

FINZZI
SURFACES

Stage Grey

Stage
Grey
18"x18" /
46x46cm



FINZZI
SURFACES

Stage Olive



Stage
Olive
18"x18" /
46x46cm



FINZZI



Stage Olive

Stage
Olive
36"x36" /
91x91cm

FTNZZI
SURFACES

Stage Black

Stage
Black
18"x18" /
46x46cm



Product Advantages



Real Touch®
True to nature.
Real Touch®
Fiel a la naturaleza.



Elastic resilience
For greater comfort when walking, avoiding possible leaks and breaks due to impact.
Resiliencia elástica
Para un mayor comfort al caminar, evitando posibles fugas y roturas por impacto.



Strong acoustic insulation
Perfect sound deadening and noise reduction.
Fuerte aislamiento acústico
Perfecta amortiguación del sonido y reducción del ruido.



Drop'n' Click®
The perfect union.
Drop'n' Click®
La unión perfecta.



Fire prevention and flame retardant
If exist the flame, it will extinguish and not produce toxic substances and gases.
Prevención de incendios y retardante de llama
Si existe llama, se extinguirá y no producirá sustancias y gases tóxicos.



Warm flooring
Finzzi's floors offer to the space a comfortable & warm sensation.
Suelo cálido
Los suelos de Finzzi hacen posible una sensación térmica agradable.



Stain resistant & low maintenance
The top layer protects against knock and stains, they can be removed in seconds.
Resistente a las manchas y bajo mantenimiento
La capa superior protege contra golpes y manchas, pudiendo eliminarlos en segundos.



Waterproof
Moisture-resistance, ideal in kitchen or bathrooms.
Resistente al agua
Resistencia a la humedad, ideal en cocina o baños.



Floor & wall use
All our products can be applied to any surface, either floor or wall.
Uso para suelo y pared
Todos nuestros productos se pueden aplicar a cualquier superficie ya sea suelo o pared.



IXPE pad
Moisture barrier and sound proofing.
Pad IXPE
Barreda de humedad e insonorización.



Suitable for underfloor heating
Finzzi's floors are perfectly compatible with underfloor heating.
Preparado para suelo radiante
Los suelos de Finzzi son perfectamente compatibles con calefacción por suelo radiante.



Antislip
Firm under foot, with a slip resistance value of R10.
Antideslizante
Con un valor de resistencia al deslizamiento de R10.



High impact resistance
Does not leave traces or marks when supporting strong blows.
Alta resistencia al impacto
No deja huellas ni marcas al soportar golpes fuertes.



Wear Layer
Commercial grade wear layer protection.
Capa de protección
Capa de desgaste protectora para uso comercial.

PROFILING INFO



Flush stair nose A
2400x72x25mm
 Escalón empotrado A
 2400x72x25mm



Flush stair nose B
2400x115x25mm
 Escalón empotrado B
 2400x115x25mm



Skirting 90mm
2400x90x15mm
 Rodapié 90mm
 2400x90x15mm



Skirting 80mm
2400x80x15mm
 Rodapié 80mm
 2400x80x15mm



Stair nose
2400x58x18mm
 Peldaño
 2400x58x18mm



Reducer
2400x43x10mm
 Reductor
 2400x43x10mm



End-Cap
2400x35x7mm
 Tapa de acabado
 2400x35x7mm



T-molding
2400x46x7mm
 Moldura en forma de T
 2400x46x7mm



Quarter round
2400x28x16mm
 Cuarto de circunferencia
 2400x28x16mm

Profiling	Flooring Thickness	Pcs/box	Kg/box
T-moulding 2400x46x7mm	4~8mm	20	10
Reducer 2400x43x10mm	4~8mm	20	15
End-Cap 2400x35x7mm	4~8mm	20	14
Stair Nose 2400x54x18mm	4~8mm	10	11
Flush Stair Nose A 2400x72x25mm	4~8mm	10	15
Flush Stair Nose B 2400x115x25mm	4~8mm	10	18
Quarter Round 2400x28x16mm	4~8mm	25	17
Skirting 2400x90x15mm	4~8mm	10	20
Skirting 2400x80x15mm	4~8mm	10	11

NOTE: The thickness of the profiling might vary slightly according to the thickness of the flooring

NOTA: El espesor del perfil puede variar ligeramente de acuerdo con el espesor del suelo.

TECHNICAL INFORMATION

TECHNICAL PERFORMANCES	STANDARDS	STAGE
Dimensional stability	EN ISO 23999	≤ 0.10%
Reaction to fire	EN 13501-1	Bfl s1 on concrete and Cft s1 on wood substrate
Residual indentation	EN ISO 24343-1	≤ 0.05 mm
Furniture leg	EN 424	No damage
Castor chair	EN ISO 4918	No damage
Curl resultant to heat	EN ISO 23999	≤ 2 mm
Underfloor heating	EN ISO 10456	Suitable - max. 27°C
Thermal resistance	ISO 10456	0.03 m ² K/W
Impact sound reduction	EN ISO EN 717-2	ΔL _w = 2 dB
Reduction of in room impact noise	NF EN ISO 31-074	Class C (L _n , e, w < 85dB)
Light fastness	EN ISO 105-B02	≥ 6
Resistance to chemicals	EN ISO 26987	High resistance
Slip resistance	EN 13893	μ ≥ 0.30
	DIN 51130	R9
Electrical properties	EN 1015	≤ 2kV on concrete
	EN 1081	> 109 Ω
Adhesion wear layer	EN 431	≥ 50N / 50mm
Colours		10



FINZZI
SURFACES

Finzzi Corporate Offices

Calle La Cosa 57, 12200 Onda (Castellón), Spain

Finzzi Sales EU

CV-20 Avda. Mediterráneo 52, 12200 Onda (Castellón), Spain

Email adress

info@finzzi.com

Email adress

europe@finzzi.com


Website

www.finzziusa.com

Follow us

 [#finzzisurfaces](#)

 [#finzzisurfaces/](#)

 [#finzzi-surfaces/](#)